

# SeaChange® QuickSilver® Input Workstation

QuickSpec

Version 4.2

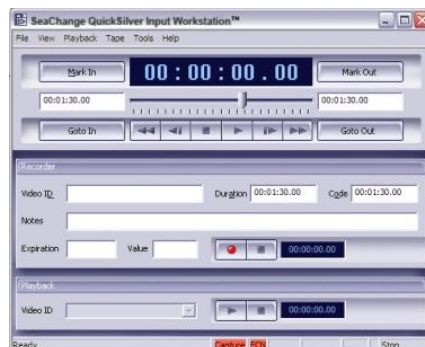
The SeaChange® QuickSilver® Input Workstation v4.2 solution provides digital media operations with the ability to prepare content delivered in digital form or on video tapes for broadband delivery. The simple and straightforward user tools control the entire content workflow from tape to video server, producing compliant MPEG content and associated metadata for ad insertion systems, Video On Demand Systems and other standards-based video servers.

Numerous streaming encoders, mixing boards, QC monitors and televisions, scopes, etc., have been qualified for use with the QuickSilver Input Workstation and are available separately from several leading manufacturers.

## DESCRIPTION

The SeaChange QuickSilver Input Workstation (IW) software components:

- The video encoding software manages communications with the VTR and the external streaming encoder, ensuring that the output of the VTR is synchronized with the encoding to produce the highest quality video/audio.
- Optional metadata editing software (sold separately) allows the operator of the system to enter the metadata required by one or more video server systems. Once completed with the data entry this software validates each of the metadata fields for compliance with specifications, like CableLabs ADI standard.
- Optional transcoder engine, powered by Anystream, that enables the input of additional digital file types. These added file types are Windows® Media 9 and Quicktime formats.
- Content upload software controls and monitors the transfer to one or more target systems, including SeaChange ad insertion, SeaChange VOD or third party VOD systems and video server systems supporting FTP.



The SeaChange QuickSilver Input Workstation interoperates with an external encoder and VTR:

- The workstation employs an external streaming encoder to deliver an open solution for the preparation of standard or high definition content. Any MPEG-2 or H.264 encoder that supports output over IP can be employed, once qualified through the SeaChange partner program. See a list of approved encoders on the back of this page.
- A standard definition or high definition-capable tape deck is controlled using the Sony remote control protocol and can be connected to the encoder using composite, component or serial digital video/audio, based on the streaming encoder's input options.

## NEW IN V4.2

### ENHANCED TV (ETV) CAPABILITIES

Input Workstation is now capable of creating QuickClips files, which are short On Demand assets that can be utilized by ETV. They are accessed by viewers through the ETV menu and are only available for a short amount of time.

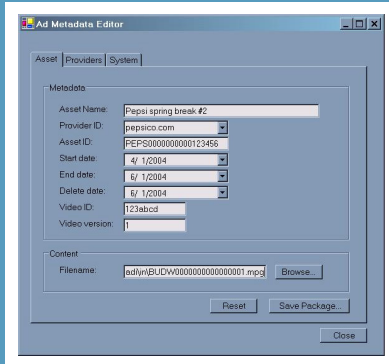
Additional ETV file types are planned to be supported in future releases of Input workstation.

## FEATURES

- Support for remote control over Sony VTR protocol
- Support for MPEG-2, and H.264 for VOD content
- SD & HD (720p, 1080i, 1080p)
- ADI 1.0, ADI 1.1, ADI 1.2 and Pegasus 1.3
- ADI Ads
- Spot DVL Upload
- Spot DVL Download
- Generic FTP
- Designed to easily incorporate support for future formats
- Unicode/2 Byte character support

## SEACHANGE ASSET METADATA EDITOR SOFTWARE

For most systems the content will need additional metadata. The SeaChange Asset Metadata Editor Software provides a straightforward graphical interface that guides users through the creation of the XML metadata required by digital media delivery systems, like ad insertion and video on demand.



With these software tools your staff can easily contribute digital content to broadband video server systems. Employing metadata templates, error checking and many other features, SeaChange's metadata solutions ensure that complete and accurate content packages can be generated by non-technical users with point and click ease. Select a metadata template and customize it to create an asset package ready for distribution across a myriad of video server systems.

- Easy to use graphical tools minimize learning curves and reduce operating costs associated with content preparation, metadata generation or modification and ingest processes
- Edit metadata received from programming partners and advertising clients
- Complete support for today's and tomorrow's broadband distribution platforms, offering ADI 1.0, 1.1, 1.2 and Pegasus 1.3 for on demand content, plus several ad-specific formats like SeaChange and C-COR™ local insertion metadata with enhanced ADI for on demand advertising
- Asset templates reduce repetitive data entry and enforce consistent presentation of content
- Allows the trimming of the leading zeroes off of the content files names
- Error checking routines ensure complete and valid information is entered before generating the distribution package

With the video encoded and metadata validated, a simple upload and the content is ready to be delivered to your subscribers. It is that simple with the SeaChange QuickSilver Input Workstation solution.

## HARDWARE

### Hardware Requirements

Input Workstation Server 2500 - Please refer to the IW Server 2500 QuickSpec for more details.

### Approved MPEG-2 Encoders

#### Standard Definition

**Harmonic:** MV-50, MV-100, BNG  
**Tandberg:** E5710  
**EGT:** EGT Prelude, EGT Quartet  
**Scopus:** Scopus 9220

#### High Definition

**Harmonic:** MV-450, MV-500  
**Tandberg:** E578x  
**EGT:** EGT Encore

### Approved H.264 Encoders

#### Standard Definition

**Harmonic:** MV-100 (VOD content only), Electra 5411  
**Optibase:** MGW 1100  
**Scopus:** Scopus 9420  
**Envivio:** 4Caster C4-SC3

SALES ORDER NO.	DESCRIPTION
<b>SWL - QS - IPW</b>	SeaChange Quicksilver Input Workstation Software License
<b>SWL - AME - VOD</b>	Asset Metadata Editor License

SeaChange International, Inc.  
50 Nagog Park, Acton, MA 01720 USA  
T 1.978.897.0100 F 1.978.897.0132  
www.schange.com

4.28\_2010



©2010 SeaChange International, Inc. SeaChange QuickSilver is a registered trademark of SeaChange International, Inc. All other marks are the property of their respective owners. While every effort is made to ensure the information given is accurate, SeaChange does not accept liability for any errors or mistakes which may arise. All features, specifications, system requirements and/or compatibility with third party products described herein are subject to change at any time without notice.